





For reliable, consistent impressions, time-after-time, choose DenMat materials. From simple cases to complex full-mouth restorations, our VPS materials and our award-winning impression trays deliver the quality you and your patients can depend on.



SplashMax®

The Ultimate VPS Impression Material for Accuracy, Reliability and Value

SplashMax is a super VPS impression material that offers instant hydrophilicity, because dead-on accuracy is needed when the material first comes in contact with dentition. In independent testing, SplashMax demonstrated the lowest contact angle almost immediately.

- Extreme wettability
- Maximum tear strength and elasticity
- Excellent dimensional accuracy
- Four high-contrast viscosities
- Wild berry scent



Extra Lite



Lite



Medium



Heavy

SplashMax features the lowest contact angle within seconds!*



*Data on file.



Product	Item #
SplashMax 2-Pack Cartridges Regular Set (4:30)	
Extra Lite Body	SPD1613
Lite Body	SPD1612
Medium Body	SPD1611
Heavy Body	SPD1610
<i>Contents: 2 – 50 ml cartridges, tips, instructions</i>	
SplashMax 2-Pack Cartridges Half-Time Set (2:15)	
Extra Lite Body	SPD1617
Lite Body	SPD1616
Medium Body	SPD1615
Heavy Body	SPD1614
<i>Contents: 2 – 50 ml cartridges, tips, instructions</i>	
SplashMax 8-Pack Cartridges Regular Set (4:30)	
Extra Lite Body	SPD1606
Lite Body	SPD1608
<i>Contents: 8 – 50 ml cartridges, instructions</i>	
SplashMax 8-Pack Cartridges Half-Time Set (2:15)	
Extra Lite Body	SPD1607
Lite Body	SPD1609
<i>Contents: 8 – 50 ml cartridges, instructions</i>	
SplashMax 20-Pack Cartridges Regular Set (4:30)	
Medium Body	SPD1604
Heavy Body	SPD1602
<i>Contents: 20 – 50 ml cartridges, instructions</i>	
SplashMax 20-Pack Cartridges Half-Time Set (2:15)	
Medium Body	SPD1605
Heavy Body	SPD1603
<i>Contents: 20 – 50 ml cartridges, instructions</i>	
SplashMax 2-Pack Jumbo Cartridges Regular Set (4:30)	
Medium Body	SPD1601
Heavy Body	SPD1600
<i>Contents: 2 – 360 ml jumbo cartridges, mixing tips, rotating rings, instructions</i>	

To order, email international@denmat.com



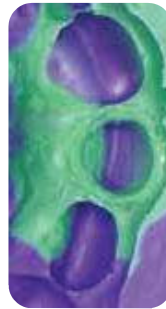


Splash!®

A Hydrophilic VPS Impression Material You Can Count On

Splash! is the ideal choice for clinicians who demand reliability and value in a VPS impression material. It features excellent flow properties, tear strength and a scent that patients love.

- Super hydrophilic
- Two set times (2:15 and 4:30)
- Available in five high-contrast colors and four delivery methods
- Wild berry scent



5 great tips for taking accurate impressions with *all* our impression materials!

- 1** Line plastic trays with an adhesive before extruding the material into the tray to prevent separation of the impression from the tray.
- 2** Avoid overfilling trays with impression material — only fill to the top of the tray and limit the amount of material extruded onto the pallet (for uppers). This saves material and prevents patient from gagging.
- 3** Use intraoral tips when applying the light body wash to ensure the material flows into all areas of the preparation.
- 4** Seat the impression on the front and back teeth simultaneously to ensure ultimate accuracy.
- 5** Let the impression set for the full duration of working and setting time to avoid the risk of pulls or tears. Using a timer to prevent removal of the impression too early is always a good idea.

Product	Item #
Splash! 2-Pack Cartridges Regular Set (4:30)	
Extra Lite Body	SPD1208
Lite Body	SPD1209
Medium Body	SPD1210
Heavy Body	SPD1211
<i>Contents: 2 – 48 ml cartridges, tips, instructions</i>	
Splash! 2-Pack Cartridges Half-Time Set (2:15)	
Extra Lite Body	SPD1230
Lite Body	SPD1231
Medium Body	SPD1232
Heavy Body	SPD1233
<i>Contents: 2 – 48 ml cartridges, tips, instructions</i>	
Splash! Bulk Packs Regular Set (4:30)	
Extra Lite Body (8-pack)	SPD1587
Lite Body (8-pack)	SPD1588
Medium Body (20-pack)	SPD1589
Heavy Body (20-pack)	SPD1590
<i>Contents: Extra Lite & Lite: 8 – 48 ml cartridges; Medium & Heavy: 20 – 48 ml cartridges</i>	
Splash! Bulk Packs Half-Time Set (2:15)	
Extra Lite Body (8-pack)	SPD1591
Lite Body (8-pack)	SPD1592
Medium Body (20-pack)	SPD1593
Heavy Body (20-pack)	SPD1594
<i>Contents: Extra Lite & Lite: 8 – 48 ml cartridges; Medium & Heavy: 20 – 48 ml cartridges</i>	
Splash! Jumbo Cartridge Refill Kit Regular Set (4:30)	
Heavy Body	SPD1559
<i>Contents: 2 – 380 ml jumbo cartridges, tips, instructions</i>	
Splash! Putty Jars	
Regular Set Putty Jars (5:30)	SPD1212
Half-Time Set Putty Jars (2:45)	SPD1235
<i>Contents: 1 – 250 ml jar base, 1 – 250 ml jar catalyst, mixing spoons, instructions</i>	
Splash! Putty Paks	
Regular Set Putty Paks (5:30)	SPD1219
Half-Time Set Putty Paks (2:45)	SPD1237
<i>Contents: 12 – 18 ml paks, instructions</i>	

Product	Item #
Ancillary Impression Items	
Mixing Tips Purple (50 pc.)	SPD1180
Mixing Tips Green (50 pc.)	SPD1181
Intraoral Tips Clear (50 pc.) <i>For Blue Tips Only</i>	SPD1184
Jumbo Cartridge Dynamic Mixing Tips – <i>Splash & Precision Only</i> (50 pc.)	11-1510
Jumbo Cartridge Mixing Tips & Rotating Ring – <i>SplashMax Only</i> (11 pc.)	030897101
Cartridge Dispenser Gun 50 ml – 1:1	030799105

To order, email international@denmat.com



Product	Item #
Precision 2-Pack Cartridges Flex Set Time (2:45 – 3:45)	
Extra Lite Body	SPD1508
Lite Body	SPD1509
Medium Body	SPD1510
Heavy Body	SPD1511
<i>Contents: 2 – 48 ml cartridges, tips, instructions</i>	
Precision Putty Jars Flex Set Time (2:45 – 3:45)	
Putty Jars	SPD1517
<i>Contents: 1 – 250 ml jar base, 1 – 250 ml jar catalyst, mixing spoons, instructions</i>	
Precision Putty Paks Flex Set Time (2:45 – 3:45)	
Putty Paks	SPD1514
<i>Contents: 12 – 18 ml paks, instructions</i>	

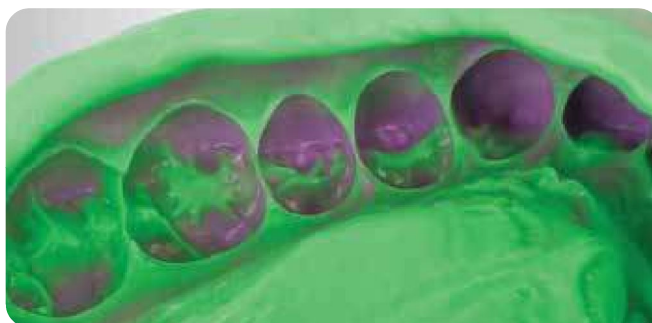
NOT AVAILABLE: European Union, Switzerland, Morocco, Russia, Ukraine, and Turkey.

Precision®

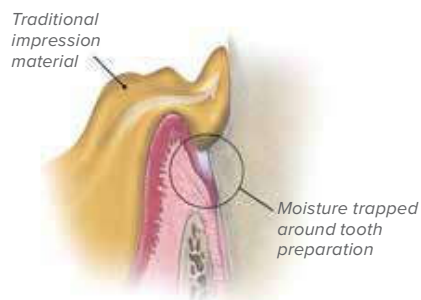
Exceptional Detail Reproduction and Moisture Displacement the First Time... and Every Time

Precision is a premium VPS impression material with amazing detail reproduction that displaces moisture to create highly detailed margins in even the most challenging situations.

- Outstanding dimensional stability
- Thermally activated flexible set times
- Wild berry scent
- Available in five high-contrast colors and four delivery methods

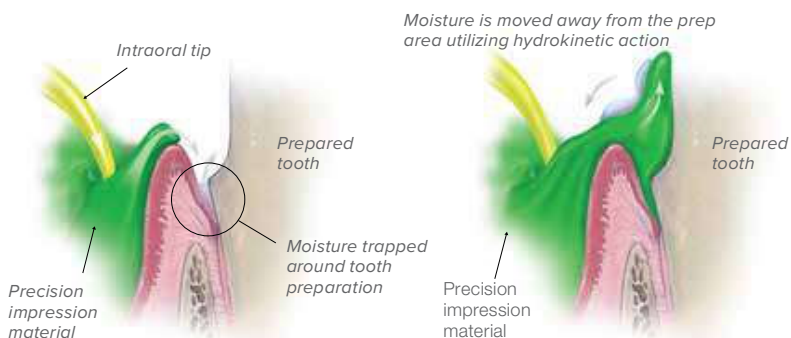


Traditional Impression Material



Traditional VPS material fails to achieve complete moisture displacement

Precision VPS Impression Material



Hydrokinetics in Action: Seeking Out & Repelling Moisture
(Detail of Precision material entering tooth sulcus)

To order, email international@denmat.com





Product	Item #
Bite Registration	
Vanilla Bite	SPD1105
Chocolate Bite	SPD1186
Clear Bite	SPD1104
MegaBite	SPD1370
<i>Contents: 2 – 48 ml cartridges, tips, instructions</i>	



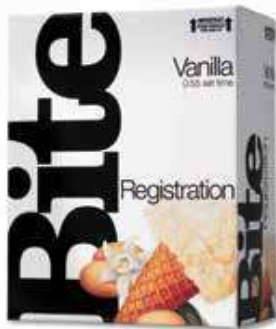
Bite Registration Materials

Stability, Accuracy and Rigidity... Everything You Need for Bite Registrations

DenMat offers a complete line of VPS bite registration materials to meet all of your procedural needs. Easy to extrude and trim, these materials are used for closed, open- and double-bite registrations.

- Extreme accuracy and stability
- Fast set times
- Easy trimming

Mousse-like Consistency



Vanilla Bite™

- Rigid
- Quick set (0:55)
- Ideal for 1-2 unit cases
- Extremely accurate and dimensionally stable

Medium Rigidity



Chocolate Bite™

- Slower set time (1:30)
- Ideal for taking full-arch quadrant registrations
- Allows for longer working times

Transparent & Flexible



Clear Bite™

- Transparent
- Ideal for temporary matrix (2:30 set time)
- Enables light passage for curing
- Great visibility of voids or bubbles

Super Rigid



MegaBite®

- Very rigid VPS bite registration material
- Fast set time (0:55)
- Exceptional accuracy
- Ideal for centric occlusion and centric relation registrations
- Minimized occlusal adjustments

To order, email international@denmat.com